



Speciale Standard
Special Standard
Sonder-Standardteile
Spécial Standard
Especial Estándar



DEBOSA propone “SPECIALE STANDARD”


Dalla valutazione dei dati storici di vendita, la  , presente da diversi anni sul mercato nazionale ed internazionale con una gamma completa di articoli di trasmissione, ha riscontrato la crescente richiesta di particolari con speciali caratteristiche, quali foro in tolleranza H7, sede per chiavette UNI e fori per bloccaggio.


In questa ottica la  ha voluto proporsi ai mercati con una gamma di articoli dalle caratteristiche speciali pronti a magazzino facendo risparmiare al cliente costi di gestione non sempre quantificabili, per l'esecuzione delle varie lavorazioni.

La disponibilità in stock dello “SPECIALE STANDARD” rappresenta un nostro punto di forza nel servizio con garanzia di pronta consegna e quotazioni competitive sui piccoli e grandi quantitativi.

Inoltre, tutte le lavorazioni trovano un unico interlocutore nel collaudo finale del particolare.

DEBOSA proposes “SPECIAL STANDARD”


As a result of the evaluation of the past selling records, the  , for several years on the national and international market with a complete range of power transmission products, has come across an increasing demand of items with special features such as bore with H7 tolerance, UNI keyways and set screws for locking.


With this idea, the  company wishes to introduce into the market a new range of special items available on stock, meaning a substantial saving for the customers in terms of machining costs required, which are often difficult to quantify.


The possibility of having the “SPECIAL STANDARD” ready on stock represents our strong point in terms of service, and imply quick deliveries and competitive prices in large as much as in small quantities.

What is more, all the variations meet one single interlocutor in the final test reserved to the piece.

DEBOSA präsentiert die Produktreihe “SONDER-STANDARDTEILE”


Eine Auswertung der Verkaufszahlen zeigte den Technikern der  - ein Unternehmen, das den italienischen und internationalen Markt seit vielen Jahren mit einem umfassenden Angebot an Antriebsselementen beliefert - daß eine steigende Nachfrage nach Sonderteilen mit Bohrungen mit Toleranzklasse H7, Paßfedermuten nach UNI-Norm sowie Gewindebohrungen für Sicherungsschrauben besteht.


Als Antwort auf diesen Bedarf präsentiert die  eine direkt ab Lager abrufbare Produktreihe von Sonderteile, durch die der Kunde alle bei einer Eigenherstellung der jeweiligen Teile anfallenden, nicht immer quantifizierbaren Kosten spart.

Die unmittelbare Verfügbarkeit der “SONDER-STANDARD TEILE” stellt das große Plus im Kundenservice der  dar. Weitere Vorteile für den Kunden sind prompte Lieferungen und konkurrenzfähige Preise für kleine und große Stückzahlen.

Außerdem ergibt sich hierdurch für sämtliche Bearbeitungen ein fester Ansprechpartner bei der Endprüfung der Teile.


DEBOSA propose “SPÉCIAL STANDARD “


Après évaluation des données historiques de vente,  , présente depuis plusieurs années sur le marché national et international avec une gamme complète de produits de transmission, a constaté la demande croissante de pièces ayant des caractéristiques spéciales, tels que alésage tolérance H7, siège pour clavette UNI et trous taraudés.

Dans cette optique,  a voulu proposer aux marchés une gamme d'articles usinés prêts au magasin, permettant au client d'économiser sur les coûts de gestion de l'exécution des différents usinages qui ne sont pas toujours quantifiables. La disponibilité en stock du “Spécial Standard” est le point fort de notre service qui assure livraisons rapides et prix compétitifs sur les petites et grandes quantités.

En outre, tous les usinages ont un interlocuteur unique lors de l'essai final de la pièce.

DEBOSA propone “ESTÁNDAR ESPECIAL”

De la valoración de los datos históricos de venta, la  , presente desde hace años en el mercado nacional e internacional con una gama completa de artículos de transmisión, ha detectado un creciente interés por piezas con características especiales, como el agujero de tolerancia H7, alojamiento para chavetas UNI y agujeros fileteados para bloqueo.

Con esta óptica la  ha querido proponer a los mercados una gama de productos con características especiales listas en stock, ahorrando así al cliente los costes difícilmente cuantificables de la ejecución de las variaciones requeridas.

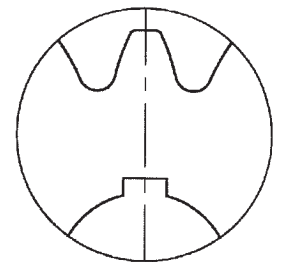
La disponibilidad en stock del “ESTÁNDAR ESPECIAL” representa el punto fuerte de nuestro servicio con la garantía de un rápida entrega y costes competitivos, tanto en pequeñas como en grandes cantidades.

Además, todas las variaciones tienen un único interlocutor en el documento de certificación final de la pieza.

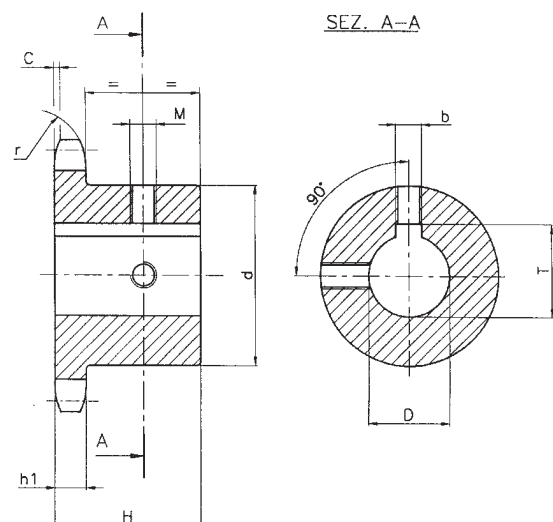
N.B. Pignoni **temprati ad induzione** sui denti (45 ÷ 55 HRC).
 Sprockets have **induction hardened** teeth (45 ÷ 55 HRC).
 Kettenraeder haben **induktionsgehaertete** Zaehne (45 ÷ 55 HRC).
 Pignons ont denture **traitée par induction** (45 ÷ 55 HRC).
 Piñones tienen dientes **templados por inducción** (45 ÷ 55 HRC).

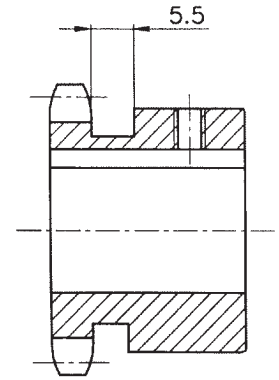
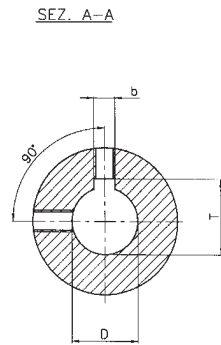
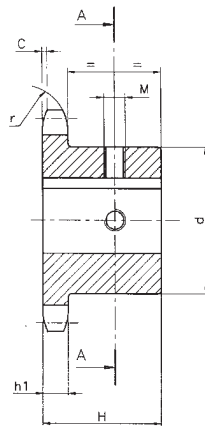


N.B. La sede linguetta è in asse con il dente.
 Keyway is located on center line of tooth.
 Die Keilnut befindet sich auf Zahnmitte.
 La rainure de clavette se trouve exactement en axe du dent.
 La chaveta està exactamente en linea con el diente.



D (H7)	B (H9)	T	M
10	4	D + 1,8 (+0,1/0)	M3
11	4	D + 1,8 (+0,1/0)	M3
12	4	D + 1,8 (+0,1/0)	M3
14	5	D + 2,3 (+0,1/0)	M4
16	5	D + 2,3 (+0,1/0)	M4
18	6	D + 2,8 (+0,1/0)	M5
19	6	D + 2,8 (+0,1/0)	M5
20	6	D + 2,8 (+0,1/0)	M5
22	6	D + 2,8 (+0,1/0)	M5
24	8	D + 3,3 (+0,2/0)	M6
25	8	D + 3,3 (+0,2/0)	M6
28	8	D + 3,3 (+0,2/0)	M6
30	8	D + 3,3 (+0,2/0)	M6
32	10	D + 3,3 (+0,2/0)	M8
35	10	D + 3,3 (+0,2/0)	M8
38	10	D + 3,3 (+0,2/0)	M8
40	12	D + 3,3 (+0,2/0)	M10
42	12	D + 3,3 (+0,2/0)	M10
45	14	D + 3,8 (+0,2/0)	M12
48	14	D + 3,8 (+0,2/0)	M12
50	14	D + 3,8 (+0,2/0)	M12
60	18	D + 4,4 (+0,2/0)	M12
65	18	D + 4,4 (+0,2/0)	M12
70	20	D + 4,9 (+0,2/0)	M12





3/8" x 7/32"

Versione (*)
Type (*) · Typ (*) · Tipo (*)

06B-1 9,525 x 5,72 mm

DIN 8187 ISO/R606

CATENA

Passo
Larghezza interna
Rullo ø

CHAIN

Pitch
Internal width
Roller ø

KETTE

Teilung
Innere Breite
Rollen ø

CHAÎNE

Pas
Largeur interieure
ø du rouleau

CADENA

Paso
Ancho interno
Rodillo ø

ISO
mm
9,525
5,72
6,35

PIGNONE

Raggio dente r
Larghezza raggio C
Largh. Dente h₁

SPROCKETS

Tooth radius r
Radius width C
Tooth width h₁

KETTENRÄDER

Radius r
Breite C
Zahnbreite h₁

PIGNONS

Rayon de denture r
Largeur de rayon C
Larg. de denture h₁

PIÑONES

Radio diente r
Ancho radio C
Ancho diente h₁

r 10
C 1
h₁ 5,3

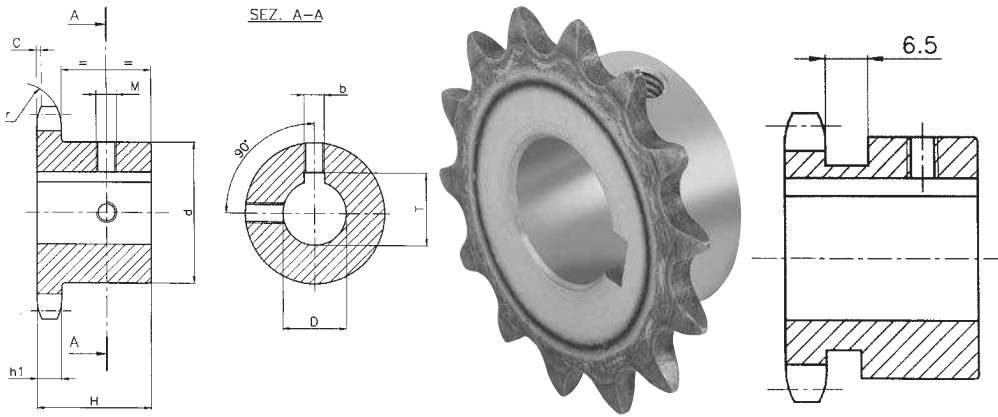
b-T-M pag./page 19

Materiale C 45 E · Material C45 E · Matière C 45 E · Materiel C 45 E - UNI EN 10083-1

CODICE	Z	D	H	d
05SA010	10	10	22	24
05SA110		11		
05SA210		12		
05SA410		14		
05SA011	11	10	25	24
05SA211		12		
05SA411		14		
05SA511		15		
05SA611	16	31*		
05SA012	12	10	25	25
05SA212		12		
05SA412		14		
05SA512		15		
05SA612	16	31*		
05SA013	13	10	25	28
05SA213		12		
05SA413		14		
05SA513		15		
05SA613	16	31		
05SA813	18	35*		
05SA214	14	12	25	31
05SA414		14		
05SA514		15		
05SA614		16		
05SA814	18	35		
05SA914	19	35		
05SA215	15	12	25	34
05SA415		14		
05SA515		15		
05SA615		16		
05SA815	18	35		
05SA915	19	36		
05SB015	20	36		
05SB215	22	38		
05SB415	24	42*		
05SB515	25	42*		
05SA216	16	12	28	37
05SA416		14		
05SA516		15		
05SA616		16		
05SA816	18	37		
05SA916	19	37		
05SB016	20	37		
05SB216	22	37		

CODICE	Z	D	H	d
05SB416	16	24	28	42
05SB516		25		
05SA217	17	12	28	40
05SA417		14		
05SA517		15		
05SA617		16		
05SA817	18	40		
05SA917	19	40		
05SB017	20	40		
05SB217	22	40		
05SB417	24	40		
05SB517	25	42		
05SA218	18	12	28	43
05SA418		14		
05SA518		15		
05SA618		16		
05SA818	18	43		
05SA918	19	43		
05SB018	20	43		
05SB218	22	43		
05SB418	24	43		
05SB518	25	43		
05SA219	19	12	28	45
05SA419		14		
05SA519		15		
05SA619		16		
05SA819	18	45		
05SA919	19	45		
05SB019	20	45		
05SB219	22	45		
05SB419	24	45		
05SB519	25	45		
05SA220	20	12	28	46
05SA420		14		
05SA520		15		
05SA620		16		
05SA820	18	46		
05SA920	19	46		
05SB020	20	46		
05SB220	22	46		
05SB420	24	46		
05SB520	25	46		
05SA521	21	15	28	48
05SA621		16		

CODICE	Z	D	H	d
05SA821	21	18	28	48
05SA921		19		
05SB021		20		
05SB221		22		
05SB421	24	48		
05SB521	25	48		
05SA522	22	15	28	50
05SA622		16		
05SA822		18		
05SA922		19		
05SB022	20	50		
05SB222	22	50		
05SB422	24	50		
05SB522	25	50		
05SA523	23	15	28	52
05SA623		16		
05SA823		18		
05SA923		19		
05SB023	20	52		
05SB223	22	52		
05SB423	24	52		
05SB523	25	52		
05SA523	24	15	28	54
05SA624		16		
05SA824		18		
05SA924		19		
05SB024	20	54		
05SB224	22	54		
05SB424	24	54		
05SB524	25	54		
05SA625	25	16	28	57
05SA825		18		
05SA925		19		
05SB025		20		
05SB225	22	57		
05SB425	24	57		
05SB525	25	57		
05SB030	30	20	30	60
05SB230		22		
05SB430		24		
05SB530		25		
05SB830	28	60		
05SC030	30	60		



Versione (*)
Type (*) · Typ (*) · Tipo (*)

08B-1 12,7 x 7,75 mm

DIN 8187 ISO/R606

1/2" x 5/16"

CATENA

Passo
Larghezza interna
Rullo ϕ

CHAIN

Pitch
Internal width
Roller ϕ

KETTE

Teilung
Innere Breite
Rollen ϕ

CHAÎNE

Pas
Largeur interieure
 ϕ du rouleau

CADENA

Paso
Ancho interno
Rodillo ϕ

ISO
mm
12,7
7,8
8,5

PIGNONE

Raggio dente r
Larghezza raggio C
Largh. Dente h_1

SPROCKETS

Tooth radius r
Radius width C
Tooth width h_1

KETTENRÄDER

Radius r
Breite C
Zahnbreite h_1

PIGNONS

Rayon de denture r
Largeur de rayon C
Larg. de denture h_1

PIÑONES

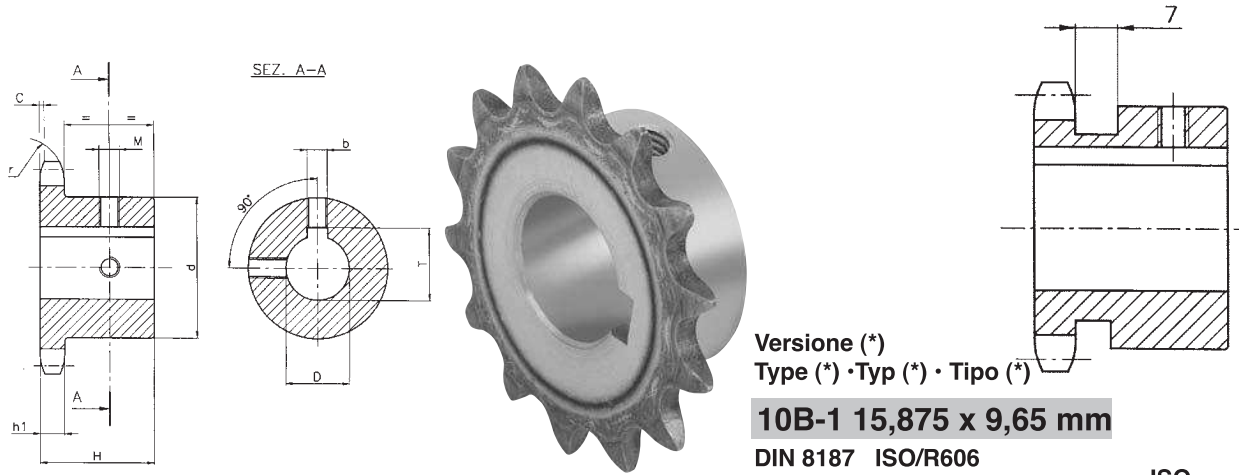
Radio diente r
Ancho radio C
Ancho diente h_1

r 13
C 1,3
 h_1 7,2

b-T-M pag./page 19

Materiale C 45 E · Material C45 E · Matière C 45 E · Materiel C 45 E - UNI EN 10083-1

CODICE	Z	D	H	d	CODICE	Z	D	H	d	CODICE	Z	D	H	d	CODICE	Z	D	H	d	
09SA210	10	12	25	26	09SA515	15	15	28	45	09SC818	18	38	28	56	09SB822	22	28	28	70	
09SA410		14		29	09SA615		16			09SA619		16		09SC022	30					
09SA510		15		30	09SA815		18			09SA819		18		09SC222	32					
09SA610		16		31	09SA915		19			09SA919		19		09SC522	35					
09SA211	11	12	25	29	09SB015	15	20	28	45	09SB019	19	20	28	60	09SC822	23	38	28	70	
09SA411		14		30	09SB215		22			09SB219		22			09SA923		19			
09SA511		15		31	09SB415		24			09SB419		24			09SB023		20			
09SA611		16		34	09SB515		25			09SB519		25			09SB223		22			
09SA811	18	35	09SB815	28	09SB819	28	09SB423	24												
09SA911	19	37	09SC015	30	47	09SC019	30	09SB523	25											
09SA212	12	12	28	33	09SC215	16	32	28	50	09SC219	19	32	28	64	09SB823	24	28	28	70	
09SA412		14			33		09SA516			15		09SC519			35		09SB823			30
09SA512		15			36		09SA616			16		09SC819			38		09SC023			32
09SA612		16			38		09SA816			18		09SA620			16		09SC223			35
09SA812	18	41*	09SA916	19	09SA820	18	09SC823	38												
09SA912	19	42*	09SB016	20	09SA920	19	09SA924	19												
09SB012	20	47	09SB216	22	09SB020	20	09SB024	20												
09SB212	22	53	09SB416	24	09SB220	22	09SB224	22												
09SB412	24	52	09SB516	25	09SB420	24	09SB424	24												
09SB512	25	53	09SB816	28	09SB520	25	09SB524	25												
09SA213	13	12	28	37	09SC016	17	30	28	52	09SB820	20	28	28	68	09SB824	24	28	28	70	
09SA413		14			53		09SC020			30		09SC020			30		09SC024			30
09SA513		15			52		09SC216			32		09SC220			32		09SC224			32
09SA613		16			52		09SA517			15		09SC520			35		09SC524			35
09SA813	18	52	09SA617	16	09SC820	38	09SC824	38												
09SA913	19	52	09SA817	18	09SA621	16	09SA925	19												
09SB013	20	52	09SA917	19	09SA821	18	09SB025	20												
09SB213	22	52	09SB017	20	09SA921	19	09SB225	22												
09SB413	24	52	09SB217	22	09SB021	20	09SB425	24												
09SB513	25	52	09SB417	24	09SB221	22	09SB525	25												
09SB813	28	52	09SB517	25	09SB421	24	09SB825	28												
09SA214	14	12	28	41	09SB817	17	28	28	52	09SB521	21	25	28	68	09SC025	25	28	28	70	
09SA414		14			45		09SC017			30		09SB821			28		09SC225			32
09SA514		15			45		09SC217			32		09SC021			30		09SC525			35
09SA614		16			45		09SA618			16		09SC821			38		09SC825			38
09SA814	18	45	09SA818	18	09SA622	16	09SB530	25												
09SA914	19	45	09SA918	19	09SA822	18	09SB830	28												
09SB014	20	45	09SB018	20	09SA922	19	09SC030	30												
09SB214	22	45	09SB218	22	09SB022	22	09SC230	32												
09SB414	24	45	09SB418	24	09SB222	22	09SC530	35												
09SB514	25	45	09SB518	25	09SB422	24	09SC830	38												
09SB814	28	45	09SB818	28	09SB522	25														
09SA215	15	12	28	45	09SC018	18	30	28	56		22	20	28	70						
09SA415		14			35		09SC218			32					22					24
					09SC518		35					25								



Versione (*)
Type (*) · Typ (*) · Tipo (*)

10B-1 15,875 x 9,65 mm

DIN 8187 ISO/R606

5/8" x 3/8"

CATENA

Passo
Larghezza interna
Rullo \varnothing

CHAIN

Pitch
Internal width
Roller \varnothing

KETTE

Teilung
Innere Breite
Rollen \varnothing

CHAÎNE

Pas
Largeur interieure
 \varnothing du rouleau

CADENA

Paso
Ancho interno
Rodillo \varnothing

ISO
mm
15,875
9,7
10

PIGNONE

Raggio dente r
Larghezza raggio C
Largh. Dente h_1

SPROCKETS

Tooth radius r
Radius width C
Tooth width h_1

KETTENRÄDER

Radius r
Breite C
Zahnbreite h_1

PIGNONS

Rayon de denture r
Largeur de rayon C
Larg. de denture h_1

PIÑONES

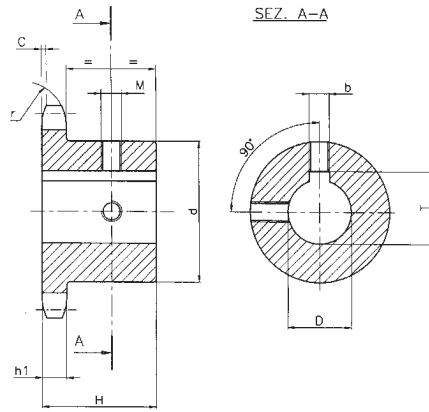
Radio diente r
Ancho radio C
Ancho diente h_1

r **16**
C **1,6**
h₁ **9,1**

b-T-M pag./page 19

Materiale C 45 E · Material C45 E · Matière C 45 E · Materiel C 45 E - UNI EN 10083-1

CODICE	Z	D	H	d	CODICE	Z	D	H	d	CODICE	Z	D	H	d	CODICE	Z	D	H	d
10SA510		15			10SB814		28			10SD218	19	42	30	70	10SC022		30		
10SA610		16			10SC014	14	30	30	52	10SA919		19			10SC222		32		
10SA910	10	19	25	35	10SC214		32			10SB019		20			10SC522	22	35	30	80
10SB010		20			10SA915		19			10SB219		22			10SC822		38		
10SB410		24		42*	10SB015		20			10SB419		24			10SD022		40		
10SA511		15			10SB215		22			10SB519		25			10SD222		42		
10SA611		16			10SB415		24			10SB819		28			10SA923		19		
10SA811		18			10SB515	15	25	30	57	10SC019	19	30	30	70	10SB023		20		
10SA911		19			10SB815		28			10SC219		32			10SB223		22		
10SB011	11	20	30		10SC015		30			10SC519		35			10SB423		24		
10SB411		24			10SC215		32			10SC819		38			10SB523		25		
10SB511		25		42	10SC515		35			10SD019		40			10SB823	23	28	30	80
10SB811		28		45	10SA916		19			10SD219		42			10SC023		30		
10SA512		15			10SB016		20			10SA920		19			10SC223		32		
10SA612		16			10SB216		22			10SB020		20			10SC523		35		
10SA812		18			10SB416		24			10SB220		22			10SC823		38		
10SA912		19		42	10SB516		25			10SB420		24			10SD023		40		
10SB012		20			10SB816	16	28	30	60	10SB520		25			10SD223		42		
10SB212	12	22	30		10SC016		30			10SB820	20	28	30	75	10SA924		19		
10SB412		24			10SC216		32			10SC020		30			10SB024		20		
10SB512		25		44	10SC516		35			10SC220		32			10SB224		22		
10SB812		28		47	10SC816		38			10SC520		35			10SB424		24		
10SC012		30		49	10SA917		19			10SC820		38			10SB524		25		
10SC212		32		51	10SB017		20			10SD020		40			10SB824		28		
10SA513		15			10SB217		22			10SD220		42			10SC024		30		
10SA613		16			10SB417		24			10SA921		19			10SC224		32		
10SA813		18			10SB517		25			10SB021		20			10SC524		35		
10SA913		19			10SB817	17	28	30	60	10SB221		22			10SC824		38		
10SB013		20		47	10SC017		30			10SB421		24			10SD024		40		
10SB213	13	22	30		10SC217		32			10SB521		25			10SD224		42		
10SB413		24			10SC517		35			10SB821	21	28	30	75	10SA925		19		
10SB513		25			10SB817		38			10SC021		30			10SB025		20		
10SB813		28			10SA918		19			10SC221		32			10SB225		22		
10SC013		30		49	10SB018		20			10SC521		35			10SB425		24		
10SC213		32		51	10SB218		22			10SC821		38			10SB525		25		
10SA514		15			10SB418		24			10SD021		40			10SB825	25	28	30	80
10SA614		16			10SB518		25			10SD221		42			10SC025		30		
10SA814		18			10SB818	18	28	30	70	10SA922		19			10SC225		32		
10SA914		19			10SC018		30			10SB022		20			10SC525		35		
10SB014	14	20	30	52	10SC218		32			10SB222	22	22	30	80	10SC825		38		
10SB214		22			10SC518		35			10SB422		24			10SD025		40		
10SB414		24			10SC818		38			10SB522		25			10SD225		42		
10SB514		25			10SD018		40			10SB822		28							



3/4" x 7/16"

12B-1 19,05 x 11,68 mm

DIN 8187 ISO/R606

CATENA

Passo
Larghezza interna
Rullo ϕ

CHAIN

Pitch
Internal width
Roller ϕ

KETTE

Teilung
Innere Breite
Rollen ϕ

CHAÎNE

Pas
Largeur interieure
 ϕ du rouleau

CADENA

Paso
Ancho interno
Rodillo ϕ

ISO
mm

19,05
11,68
12,07

PIGNONE

Raggio dente r
Larghezza raggio C
Largh. Dente h_1

SPROCKETS

Tooth radius r
Radius width C
Tooth width h_1

KETTENRÄDER

Radius r
Breite C
Zahnbreite h_1

PIGNONS

Rayon de denture r
Largeur de rayon C
Larg. de denture h_1

PIÑONES

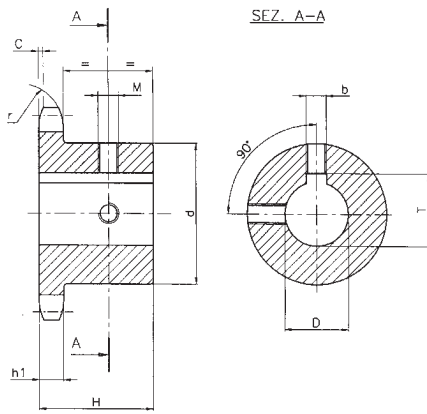
Radio diente r
Ancho radio C
Ancho diente h_1

r 19
C 2
 h_1 11,1

b-T-M pag./page 19

Materiale C 45 E • Material C45 E • Matière C 45 E • Materiel C 45 E - UNI EN 10083-1

CODICE	Z	D	H	d	CODICE	Z	D	H	d	CODICE	Z	D	H	d	CODICE	Z	D	H	d
11SA910		19			11SC214		32			11SD018	18	40			11SC822		38		
11SB010		20			11SC514		35			11SD218		42	35	80	11SD022		40		
11SB410		24		42	11SC814	14	38	35	64	11SB519		25			11SD222	22	42	40	90
11SB510	10	25	30		11SD014		40		67	11SB819		28			11SD522		45		
11SB810		28		45	11SA915		19			11SC019		30			11SD822		48		
11SC010		30		47	11SB015		20			11SC219		32			11SE022		50		
11SC210		32		49	11SB215		22			11SC519		35			11SB523		25		
11SA911		19			11SB415		24			11SC819	19	38	35	80	11SB823		28		
11SB011		20		46	11SB515		25			11SD019		40			11SC023		30		
11SB411		24			11SB815	15	28	35	70	11SD219		42			11SC223		32		
11SB511	11	25	35		11SC015		30			11SD519		45			11SC523		35		
11SB811		28		49	11SC215		32			11SD819		48			11SC823	23	38	40	90
11SC011		30		51	11SC515		35			11SE019		50			11SD023		40		
11SC211		32		53	11SC815		38			11SB520		25			11SD223		42		
11SA912		19			11SD015		40			11SB820		28			11SD523		45		
11SB012		20			11SA916		19			11SC020		30			11SD823		48		
11SB212		22			11SB016		20			11SC220		32			11SE023		50		
11SB412		24		52	11SB216		22			11SC520		35			11SB524		25		
11SB512	12	25	35		11SB416		24			11SC820	20	38	35	80	11SB824		28		
11SB812		28			11SB516		25			11SD020		40			11SC024		30		
11SC012		30			11SB816	16	28	35	75	11SD220		42			11SC224		32		
11SC212		32		53	11SC016		30			11SD520		45			11SC524		35		
11SC512		35		56	11SC216		32			11SD820		48			11SC824	24	38	40	90
11SA913		19			11SC516		35			11SE020		50			11SD024		40		
11SB013		20			11SC816		38			11SB521		25			11SD224		42		
11SB213		22			11SD016		40			11SB821		28			11SD524		45		
11SB413		24			11SB517		25			11SC021		30			11SD824		48		
11SB513	13	25	35	58	11SB817		28			11SC221		32			11SE024		50		
11SB813		28			11SC017		30			11SC521		35			11SB525		25		
11SC013		30			11SC217		32			11SC821	21	38	40	90	11SB825		28		
11SC213		32			11SC517	17	35	35	80	11SD021		40			11SC025		30		
11SC513		35			11SC817		38			11SD221		42			11SC225		32		
11SC813		38			11SD017		40			11SD521		45			11SC525		35		
11SA914		19			11SD217		42			11SD821		48			11SC825	25	38	40	90
11SB014		20			11SB518		25			11SE021		50			11SD025		40		
11SB214		22			11SB818		28			11SB522		25			11SD225		42		
11SB414	14	24	35	64	11SC018		30			11SB822		28			11SD525		45		
11SB514		25			11SC218	18	32	35	80	11SC022	22	30	40	90	11SD825		48		
11SB814		28			11SC518		35			11SC222		32			11SE025		50		
11SC014		30			11SC818		38			11SC522		35							



1" x 17,02 mm

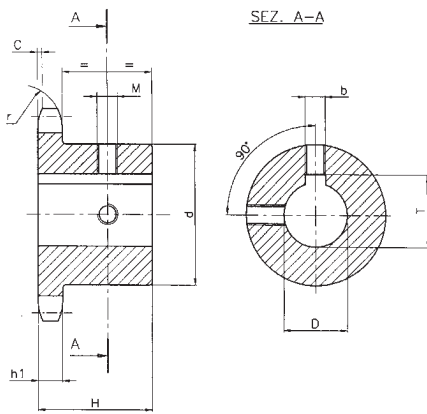
16B-1 25,4 x 17,02 mm
DIN 8187 ISO/R606

CATENA Passo Larghezza interna Rullo \varnothing	CHAIN Pitch Internal width Roller \varnothing	KETTE Teilung Innere Breite Rollen \varnothing	CHAÎNE Pas Largeur interieure \varnothing du rouleau	CADENA Paso Ancho interno Rodillo \varnothing	ISO mm 25,4 17,02 15,88
PIGNONE Raggio dente r Larghezza raggio C Largh. Dente h_1	SPROCKETS Tooth radius r Radius width C Tooth width h_1	KETTENRÄDER Radius r Breite C Zahnbreite h_1	PIGNONS Rayon de denture r Largeur de rayon C Larg. de denture h_1	PIÑONES Radio diente r Ancho radio C Ancho diente h_1	r 26 C 2,5 h₁ 16,2

b-T-M pag./page 19

Materiale C 45 E • Material C45 E • Matière C 45 E • Materiel C 45 E - UNI EN 10083-1

CODICE	Z	D	H	d	CODICE	Z	D	H	d	CODICE	Z	D	H	d	CODICE	Z	D	H	d
12SB511	11	25	40	61	12SC015	15	30	40	92	12SD818	18	48	45	100	12SC822	22	38	50	110
12SB811		28			12SC215		32			12SE018		50			12SD022		40		
12SC011		30			12SC515		35			12SB519		25			12SD222		42		
12SC211		32			12SC815		38			12SB819		28			12SD522		45		
12SC511		35			12SD015		40			12SC019		30			12SD822		48		
12SC811		38		12SD215	42		12SC219		32	12SE022		50							
12SD011		40		12SD515	45		12SC519		35	12SB523		25							
12SD211		42		12SD815	48		12SC819		38	12SB823		28							
12SB512		25		12SE015	50		12SD019		40	12SC023		30							
12SB812		28		12SB516	25		12SD219		42	12SC223		32							
12SC012		30		12SB816	28		12SD519		45	12SC523		35							
12SC212	32	12SC016	30	12SD819	48	12SC823	38												
12SC512	35	12SC216	32	12SE019	50	12SD023	40												
12SC812	38	12SC516	35	12SB520	25	12SD223	42												
12SD012	40	12SC816	38	12SB820	28	12SD523	45												
12SD212	42	12SD016	40	12SC020	30	12SD823	48												
12SB513	25	12SD216	42	12SC220	32	12SE023	50												
12SB813	28	12SD516	45	12SC520	35	12SB524	25												
12SC013	30	12SD816	48	12SC820	38	12SB824	28												
12SC213	32	12SE016	50	12SD020	40	12SC024	30												
12SC513	35	12SB517	25	12SD220	42	12SC224	32												
12SC813	38	12SB817	28	12SD520	45	12SC524	35												
12SD013	40	12SC017	30	12SD820	48	12SC824	38												
12SD213	42	12SC217	32	12SE020	50	12SD024	40												
12SD513	45	12SC517	35	12SB521	25	12SD224	42												
12SD813	48	12SC817	38	12SB821	28	12SD524	45												
12SE013	50	12SD017	40	12SC021	30	12SD824	48												
12SB514	25	12SD217	42	12SC221	32	12SE024	50												
12SB814	28	12SD517	45	12SC521	35	12SB525	25												
12SC014	30	12SD817	48	12SC821	38	12SB825	28												
12SC214	32	12SE017	50	12SD021	40	12SC025	30												
12SC514	35	12SB518	25	12SD221	42	12SC225	32												
12SC814	38	12SB818	28	12SD521	45	12SC525	35												
12SD014	40	12SC018	30	12SD821	48	12SC825	38												
12SD214	42	12SC218	32	12SE021	50	12SD025	40												
12SD514	45	12SC518	35	12SB522	25	12SD225	42												
12SD814	48	12SC818	38	12SB822	28	12SD525	45												
12SE014	50	12SD018	40	12SC022	30	12SD825	48												
12SB515	25	12SD218	42	12SC222	32	12SE025	50												
12SB815	28	12SD518	45	12SC522	35														



1" x 1/4 x 3/4"

20B-1 31,75 x 19,56 mm

DIN 8187 ISO/R606

CATENA

Passo
Larghezza interna
Rullo ϕ

CHAIN

Pitch
Internal width
Roller ϕ

KETTE

Teilung
Innere Breite
Rollen ϕ

CHAÎNE

Pas
Largeur interieure
 ϕ du rouleau

CADENA

Paso
Ancho interno
Rodillo ϕ

ISO
mm
31,75
19,56
19,05

PIGNONE

Raggio dente r
Larghezza raggio C
Largh. Dente h_1

SPROCKETS

Tooth radius r
Radius width C
Tooth width h_1

KETTENRÄDER

Radius r
Breite C
Zahnbreite h_1

PIGNONS

Rayon de denture r
Largeur de rayon C
Larg. de denture h_1

PIÑONES

Radio diente r
Ancho radio C
Ancho diente h_1

r 32
C 3,5
h₁ 18,5

b-T-M pag./page 19

Materiale C 45 E • Material C45 E • Matière C 45 E • Matériel C 45 E - UNI EN 10083-1

CODICE	Z	D	H	d
13SB509	09	25	40	63
13SC009		30		
13SC209		32		
13SC509		35		
13SC809		38		
13SB510	10	25	40	70
13SC010		30		
13SC210		32		
13SC510		35		
13SC810		38		
13SB511	11	25	45	77
13SB811		28		
13SC011		30		
13SC211		32		
13SC511		35		
13SC811		38		
13SD011		40		
13SD211		42		
13SD511		45		
13SE011		50		
13SF011		60		
13SB512	12	25	45	88
13SB812		28		
13SC012		30		
13SC212		32		
13SC512		35		
13SC812		38		
13SD012		40		
13SD212		42		
13SD512		45		
13SD812		48		
13SE012		50		
13SF012		60		
13SB513	13	25	45	98
13SB813		28		
13SC013		30		
13SC013		30		

CODICE	Z	D	H	d
13SC213	13	32	45	98
13SC513		35		
13SC813		38		
13SD013		40		
13SD213		42		
13SD513		45		
13SD813		48		
13SE013		50		
13SF013		60		
13SC214		14		
13SC514	35			
13SC814	38			
13SD014	40			
13SD214	42			
13SD514	45			
13SC814	48			
13SE014	50			
13SF014	60			
13SC215	15		32	45
13SC515		35		
13SC815		38		
13SD015		40		
13SD215		42		
13SD515		45		
13SD815		48		
13SE015		50		
13SF015		60		
13SC816		16	38	
13SD016	40			
13SD216	42			
13SD516	45			
13SD816	48			
13SE016	50			
13SF016	60			
13SF516	65			
13SG016	70			

CODICE	Z	D	H	d
13SC817	17	38	50	120
13SD017		40		
13SD217		42		
13SD517		45		
13SD817		48		
13SE017		50		
13SF017		60		
13SF517	65			
13SG017	70			
13SC818	18	38	50	120
13SD018		40		
13SD218		42		
13SD518		45		
13SD818		48		
13SE018		50		
13SF018		60		
13SF518	65			
13SG018	70			
13SC819	19	38	50	120
13SD019		40		
13SD219		42		
13SD519		45		
13SD819		48		
13SE019		50		
13SF019		60		
13SF519	65			
13SG019	70			
13SC820	20	38	50	120
13SD020		40		
13SD220		42		
13SD520		45		
13SD820		48		
13SE020		50		
13SF020		60		
13SF520	65			
13SG020	70			